



Proposed Budget Preserves Current Programs

Retention of Staff and Programs, Prudent Use of Prior Years' State Aid, Replenishment of Reserves, and Proposed 2.06% Tax Levy Increase

After a total of ten public budget meetings and significant analysis and discussion, the Board of Education has adopted a proposed budget for the 2011-12 school year that preserves current programs, adjusts staffing slightly downward in reaction to enrollment changes, and applies Prior Years' State Aid (PYSA) and fund balance to mitigate the tax increase.

The budget-to-budget spending increase is 3.47%, and is largely driven by a substantial increase in mandated pension and health insurance contributions. The tax levy increase is 2.06%.

An important backdrop to this proposed budget is the renewed financial health of the district. After sustaining extreme stress in recent years, the district now finds itself in a much more stable position for the foreseeable future. PYSA funds have been placed in the tax stabilization reserve, and will continue to be used in a prudent manner to offset tax increases. Other reserves have been replenished, and the district has generated a fiscally sound fund balance this year due to aggressive and prudent management of the budget.

In addition to these measures, a new contract was signed with the District Teacher's Union in February, which called for consecutive \$0 increases in base pay; 0% to base pay for the first year, 0% in the second year with a \$500 payment, 1.5% the third year and 2% the fourth year.

"We find ourselves in a place that allows for the key priorities to be met successfully in the future," said Dr. Harriet Copel, Superintendent of Schools. "Our instructional programs, co-curricular programs, and staffing levels – as lean as they are – should be preserved. In addition, taxpayers can expect careful attention to the bottom line by using dedicated funds in a manner that will limit tax increases associated with future budgets."

One of the ways in which the district is attempting to get ahead of challenges before they arise is demonstrated in the special propositions that are being offered this year to voters. Neither of

- The proposed tax levy increase is 2.06%, and the proposed spending increase is 3.47%.
- All current programs, services and staffing are preserved, except for necessary and obvious efficiencies.
- The budget returns money to taxpayers through fund balance and the Tax Stabilization Reserve.

these propositions, which concern district infrastructure, will result in tax increases to district residents.

"We saw with the Briarcliff roof that you can never take anything for granted," said Board of Education President Jack Costas. "Our facilities are the community's assets and they've got to be taken care of in a cost-effective manner. The two propositions we are offering this year, which are paid for out of the tax stabilization reserve, will ensure that we stay on top of our infrastructure needs."

Three seats on the Board of Education are up for election this year. Information on the candidates is located on page five of this newsletter.

In addition to this newsletter, an abundance of budget and budget-related information is available on the District website which can be accessed by visiting www.swrschools.org.

Proposed Budget

1

The proposed school budget for 2011-12 carries a 3.47% budget increase, and a 2.06% tax levy increase. \$59,976,799

Two Special Propositions No Tax Impact

Drainage Improvement

2

Storm drainage improvement where the entrance of Briarcliff Elementary meets Towerhill Road. Current drainage is poor and is undermining the roadway, as well as creating an ice hazard in winter months. \$66,144

Oil Tank Replacement

3

Replacement of six underground oil tanks at four schools. This is a preventive measure to ensure that aged, single wall steel tanks do not rupture and create an environmental hazard or financial liability. \$825,000

Proposed Budget Maintains...

- All music programs
- All art programs
- All athletic teams
- Advanced Placement (AP) classes
- High School electives
- Honors classes
- College Credit classes
- Middle School programs
- Middle School and High School co-curricula activities
- Class sizes similar to 2010-11
- All special education services and programs
- MA and WR fifth-grade plays

Proposed Budget Addresses...

- Governor's reduction of State Aid
- Double-digit increases in pension and health insurance rates, largely out of our control
- Building maintenance and equipment that had been deferred
- Elementary field trips

Proposed Budget Reduces/Cuts...

- Consultants and professional development
- 2 elementary teachers due to enrollment
- 1.2 High School teachers due to enrollment
- 1 districtwide physical education teacher retiring and not being replaced
- 1 clerical position

Shoreham-Wading River
School District
Shoreham, New York 11786

Nonprofit Org.
U.S. Postage
PAID
Permit No. 3
Shoreham, N.Y. 11786

ECRWSS
Postal Patron

Our district operates in a very cost-efficient manner. When compared to similar schools, we spend 14.55% less to educate our general education students and 28.2% less to educate our special education students. We also spend less in comparison to all New York State schools (5.23% for general education, and 11.04% for Special Education).

EXPENDITURES

A copy of the full budget is available on the district website: www.swrschools.org

Account Group	2010-11 Adopted Budget	2011-12 Proposed Budget	NOTES
Personnel	\$29,036,928	\$29,389,050	Mandated pension contributions and health insurance premium increases are the majority of the spending increase for the second consecutive year.
Equipment	\$41,322	\$176,208	
Contractual	\$8,628,235	\$8,521,662	
Supplies and Materials	\$1,169,364	\$1,117,513	
Tuition	\$650,000	\$770,000	
Textbooks	\$173,115	\$170,930	
BOCES Services	\$3,044,408	\$3,300,369	
* Employee Benefits	14,248,267	15,638,829	
Debt Service - Principal	\$259,591	\$270,544	
Debt Service - Interest	\$482,647	\$471,694	
Interfund Transfers	\$233,600	\$150,000	
Total Budget	\$57,967,477	\$59,976,799	

In a year of great financial uncertainty – especially at the State level – we have spent a great deal of time these past several months discussing how to contend with the one-two punch of revenue reduction and significant increases in health care costs and mandated pension contributions. Of major concern is a proposed tax ‘cap’ of 2%, promoted by the Governor and approved by the State Senate. While the Assembly has yet to take up this bill, we have paid careful attention to how it will impact our district and have planned accordingly. Therefore, even though this is not yet our legal obligation, the proposed budget essentially offers a cap-based scenario to our voters, with an estimated tax levy increase of 2.06%. Arriving at this level on the expenditure side of the budget is quite a challenge, given the numerous unfunded mandates with which we contend with (and which our Legislature has yet to address), along with crushing increases in pension costs and health insurance costs. For example, total pension contribution increases are projected to be \$800,000, and total health insurance increases are projected to be \$1.28 million for next year. These are not sustainable increases within the long-term context of the projected 2% cap, and we, along with many others, are lobbying for some type of relief for the taxpayers in this regard. The proposed budget preserves the instructional program and staffing that currently exists, with the exception of modest downward staffing due to enrollment changes. Prudent financial planning, including a limitation on long-term liabilities, effective use of reserves, and targeted efficiencies have allowed us to deliver a budget that preserves the quality of our instructional program. **Specifically, the proposed budget will continue our commitment to students through appropriate class size, academic rigor for all students, Advanced Placement and college credit courses, High School electives, all art and music programs, and a full complement of co-curricular programs, including athletics.** Readers also will note that this budget restores some equipment purchases necessary to efficiently run our operations. This includes two vehicles (new or used) for buildings and grounds at a cost of \$70,000, which will limit the wear and tear on other district vehicles, thereby extending their useful life and getting the most value for taxpayer investment.

Meeting the 2% Tax Levy Goal

REVENUE NOTES

As we did last year, the district will apply \$800,000 from the Tax Stabilization Reserve (prior years’ state aid) and up to \$750,000 in fund balance to offset the increase in the tax levy and the \$300,000 loss in State aid.

TOWN	2010/11 LEVY	2011/12 LEVY	DIFFERENCE
Brookhaven Tax	\$34,622,853	\$35,336,659	\$713,806
Riverhead Tax	\$11,895,591	\$12,141,901	\$246,310

The estimated tax levy increase for 2011-12 is 2.06%.

The proposed budget minus all other revenues is referred to as the Tax Levy.

Contingent Budget

Under a contingent budget, the district will have to reduce its planned spending increase from 3.47% to 1.97%. By law, this means a defeated budget will require a reduction of \$868,499 in spending from the proposed budget. Reductions that are likely to take place include:

- Reduction in athletic program (MS and JV eliminated)
- Limited staffing/program reductions to be determined
- Equipment purchases, including new/used vehicles

Two Special Propositions, No Tax Impact Drainage Improvement, Oil Tank Replacement on Ballot

Two special propositions will be on the ballot on May 17 that ask for voter authorization to address important infrastructure issues in the district.

Proposition #2 calls for stormwater drainage improvement at Briarcliff Elementary School in the amount of \$66,144. Proposition #3 calls for the replacement of six underground fuel oil tanks (at four schools) in the amount of \$825,000.

There is no tax impact associated with these propositions, as funding will come from the district's Tax Stabilization Reserve Fund; however, voter authorization is required to use the funds in this manner.

Proposition #2 – Stormwater Drainage at Briarcliff

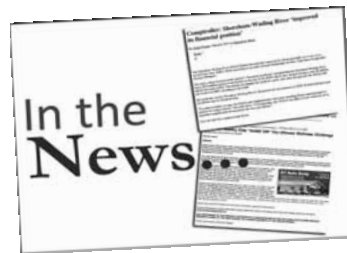
In the picture at right, the patched over asphalt indicates the drainage issue at Briarcliff. Because of ineffective drainage, the water pools here, creating an ice hazard and undermining the roadway. Our goal is to eliminate the pooling of water that occurs where the Briarcliff entrance meets Tower Hill Road. To do this, contractors will excavate and install expanded drainage. This will eliminate or at least greatly reduce the erosion of soil and deterioration of asphalt, as well as eliminate the hazardous driving conditions when ice forms.



Proposition #3 – Oil Tank Replacement

The district has six underground oil tanks, with an average age of more than 43 years. There are two tanks at Miller Avenue that were installed in 1962; one at Wading River installed in 1963; one at Briarcliff installed in 1965; and two at the High School installed in 1975. These are single wall steel tanks that eventually rot, creating an environmental and financial hazard, and due to their age, cost of replacement is not covered by insurance!

The Board believes it is imperative that these tanks are replaced before we are forced to contend with a major financial challenge. Testing is done weekly on the tanks, and currently shows no apparent leakage, but as we saw with the Briarcliff roof, failure is often not predictable. Should we face a leak with one of these tanks, the environmental remediation costs will be significant and will be borne solely by the district.



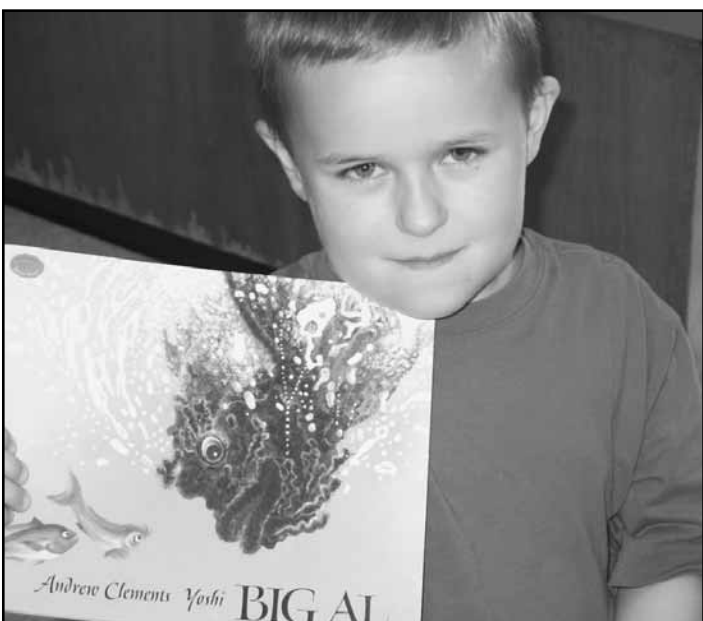
It has been quite a year for the district and there's no better place to catch up on the achievements of our students, positive developments for the district, and ongoing activities than by visiting our website at www.swrschools.org!



Shoreham-Wading River High School Principal Daniel Holtzman and Superintendent of Schools Dr. Harriet Copel are pictured with (right) Class of 2011 Valedictorian Rachel Szymanski and Salutatorian Michelle Gostic.

Points of Pride

- 50% of the graduating class (Class of 2010) received Advanced Regents diplomas; 39% received a Regents diploma.
 - 60% of the graduating class (Class of 2010) attended four-year colleges; 34% attended two-year colleges; 6% entered the military or workforce.
 - Five High School students were named Commended Students in the National Merit Scholarship Program.
 - Twenty currently enrolled students have earned the designation of Advanced Placement (AP) Scholars.
 - The High School newspaper, Wildcat Pause, and its student-staff received numerous awards in high school journalism contests.
 - Hundreds of students districtwide attended All-County and All-State music festivals through SCMEA, LISFA, and NYSSMA.
 - Two High School students were selected as Young Scholars of Mathematics by the Institute of Problem Solving.
- The photographs of several High School art students have been selected for Jones Soda labels.
 - Three Wading River Elementary School students entered selections into the PTA Reflections state-level competition.
 - Eleven High School athletic teams received the designation of Scholar-Athlete Teams.
 - Hundreds of students participated in school plays including Music Man, Jr., Seussical, and Rats-The Musical



Questions/Answers about the Budget



Many school districts are cutting staff and programs in their proposed budgets for next year. How come we don't have to do the same thing?

There are several reasons, all revolving around revenue sources. First, the \$1.3 billion state aid reduction has hit some districts particularly hard, which has been the driving force in staff reductions. For example, some of our neighbors are losing several million dollars in state aid. There is no way to reconcile this revenue loss without cutting staff, since personnel expenses typically account for roughly 75% of the total budget. By comparison, the reduction in aid to our district was approximately \$300,000.

Second, the district is fortunate that two other revenue sources are available to us that other districts may not have. Our PYSA (Prior Years' State Aid) now allows us to mitigate tax increases that would otherwise be achieved only by cutting spending on staff and programs. In addition, we have aggressively managed the district's budget to create fund balance, some of which is being returned to taxpayers in this budget.

But doesn't that mean that we could have cut more staff and programs and lowered the tax levy even further?

Yes, it does. But it also means further cutting into the heart of the program and disadvantaging our students by reducing instructional services that are already lean. Over the past several years the district cut several teaching positions, reading teachers,

librarians, a social worker, co-curricular activities, consultants and professional development, and other areas of the budget. Consistent cutting – especially of a program that is already without frills – will negatively impact students.

Were reserves used last year to reduce the tax levy?

Yes. Eight hundred thousand dollars of Prior Years' State Aid (PYSA) from the Tax Stabilization Reserve was used to reduce the tax levy.

Are we using reserves to reduce the tax levy for next year?

Yes. The district will use \$800,000 of PYSA from the Tax Stabilization Reserve to reduce the tax levy, as well as funds from other reserves and fund balance. The district will use \$325,000 from other reserves and up to \$750,000 from fund balance.

Does that mean we can apply even more money from the Tax Stabilization Reserve to lower the tax rate further?

Yes, but that's not the purpose of a reserve like this, because as we've seen, very large applications of one-time revenues have the unfortunate effect of creating tax spikes in subsequent years. Used properly, this reserve will 'smooth' tax increases when necessary, continue to appreciate to create additional revenues for taxpayers, and allow for other budgetary measures to avoid unwanted tax increases for the next decade if used wisely.

It has been stated that staff adjustments have been made based upon enrollment changes. What does this mean?

The current senior class is very large – approximately 60 students larger than any other class. This necessitates a reduction of 1.2 teachers because we have fewer students in the high school. In addition, there will be two or three fewer sections in the elementary schools due to a decrease in enrollment.

The district wants to purchase two new or used vehicles in the proposed budget. Can't this be put off to another year?

There is an allocation in the proposed budget of \$70,000 for two vehicles: either a new or used tractor and a new or used box truck with a snow plow. The district is using a tractor that is from 1955 (pictured above) as part of its fleet, and snow plowing has taken an extreme toll on all of our buildings and grounds vehicles. Some of the equipment is literally 'dying off' after being used well beyond expected life spans, and maintenance costs are high based on the age of the vehicles. Making these purchases is considered a wise decision by the Board to ensure that we lengthen the life span of our remaining vehicles.

Remember to Vote on Tuesday, May 17th, 7 am - 9 pm in the HS Gym

Shoreham-Wading River Central School District Budget Notice

	Budget Adopted for the 2010-2011 School Year	Budget Proposed for the 2011-2012 School Year	Contingency Budget for the 2011-2012 School Year*
Total budgeted amount	\$57,967,477	\$59,976,799	\$59,108,300
Increase/decrease for the 2011-2012 school year		\$2,009,322	\$1,140,823
Percentage increase/decrease in each proposed budget		3.47%	1.97%
Change in the consumer price index		1.60%	
Resulting est. property tax levy for the 2011-2012 school year		\$47,478,560	\$46,610,061
Administrative component	\$7,268,228	7,389,167	\$7,269,918
Program component	\$43,010,494	\$44,795,985	\$44,112,436
Capital component	\$7,688,755	\$7,791,647	\$7,725,946

* Statement of assumptions made in projecting a contingency budget for the 2011-2012 school year, should the proposed budget be defeated.
 All equipment purchases will be eliminated, with the exception of replacement equipment required for health and safety. All capital improvements, with the exception of health and safety items, will be eliminated, along with certain parts of athletics, extracurricular clubs, field trips, and instructional staff. Facility usage fees will be instituted.

Basic STAR Exemption Impact

Estimated Basic STAR² Exemption Savings:

	Budget Proposed for the 2011-2012 School Year
Basic STAR tax savings (est.)	\$1,009

STAR tax savings information was provided by the New York State Office of Real Property Services.

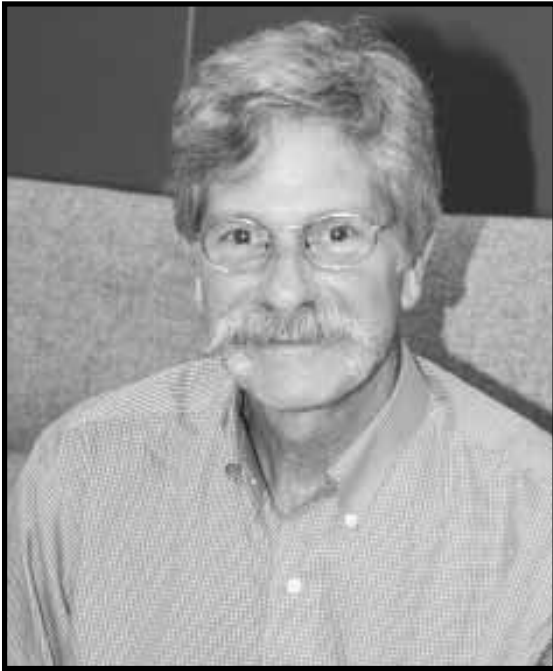
The annual budget vote for the fiscal year 2011-2012 by the qualified voters of the Shoreham-Wading River School District, Suffolk County, New York, will be held at Shoreham-Wading River High School in said district on Tuesday, May 17, 2011 between the hours of 7:00 am and 9:00 pm, at which time the polls will be opened to vote by voting machine.

¹ Provide a statement of assumptions made in estimating the contingency budget pursuant to section 2023 of the Education Law.

² The basic school tax relief (STAR) exemption is authorized by section 425 of the Real Property Tax Law.

2011 Board Election

District residents will be asked to elect three individuals to the Board of Education, each for a term of three years. There are seven candidates seeking election and the three individuals receiving the highest number of votes will be elected.



Robert Alcorn

PHONE: 631.929.8685

ADDRESS: 120 Farm Road West, Wading River, NY 11792

ENUMERATION OF SPECIFIC PRIORITIES IF ELECTED

- I'm not going to make any specific promises regarding what I would do in a second term, because one thing I've learned while on the Board is that it's just about impossible to see what's coming down the road. Education today is a constantly changing landscape, particularly with regards to state mandates and state funding.
- My only promise is to review each issue that arises with an open mind, and consider the interests of the students, parents, and wider community in making a decision.
- I'll continue to try to make this the best school district possible, and strive to continue to offer as many opportunities for the students of the district as we can afford.

CONTRIBUTIONS CANDIDATE CAN MAKE TO THE SCHOOL DISTRICT:

It has been my privilege to have served the community as a trustee of the SWR Board of Education for the past three years. It hasn't been an easy task,

and there have been numerous occasions when I questioned my decision to run in the first place. Until quite recently, it was not my intention to put my name on the ballot for another three-year term, but a number of people approached me and asked me to consider running again. After much soul searching, I've decided to give it another shot.

During my three-year tenure, I have had to make decisions that I knew would be unpopular with certain segments of the population. But my decisions have always been based on what I believe to be in the best interests of the district as a whole. I believe that I have consistently been honest and forthright in my interactions with community members, staff, and administration.

As a homeowner in the district since 1974 (first in Shoreham and currently in Wading River), a retiree on a fixed income, a parent with four children who went through the district schools, a grandparent of a child who will be entering school in a few years, a former teacher, a former business owner, and a taxpayer, I believe I can empathize with a broad range of residents in the district.

EDUCATION

Nassau Community College – A.A.
SUNY Stony Brook – B.A. History and Education
SUNY Stony Brook – M.A. Liberal Studies

COMMUNITY ACTIVITIES

SWR Little League Coach and Board Member – (1980-1993)
Wading River Historical Society – (1981-present)
Wading River Civic Association – (1996-present)

PROFESSIONAL OR BUSINESS EXPERIENCE FOR THE LAST FIVE YEARS

SWR Board of Education Trustee – (three years)



Jack Costas

PHONE: 631.821.6445

ADDRESS: 9 The Bend, Shoreham, NY 11786

- Shoreham-Wading River School District Legislative Committee member
- Shoreham-Wading River School District Audit Committee member
- School volunteer for Learning Centers and Literacy Centers

PROFESSIONAL OR BUSINESS EXPERIENCE FOR THE LAST FIVE YEARS

- Small business owner- General Contractor and Construction Manager
- Member of the Shoreham-Wading River Board of Education – (July 2008 – current)

ENUMERATION OF SPECIFIC PRIORITIES IF ELECTED

- I promise transparency; that there will be openness and honesty as required by law in District decision-making and practice.
- I will continue as I did this year, to

demand from the administration a lean budget and keeping per pupil costs lower than comparable districts.

- I will continue working to restore a humane and respectful environment for our children, staff, and parents in our schools.

CONTRIBUTIONS CANDIDATE CAN MAKE TO THE SCHOOL DISTRICT:

Three years ago, I was honored to be elected to the Board of Education. I have spent countless hours committed to improving the school district. I look forward to continuing to serve the district and children.

- Strive to maintain student programs
- Maintain and support athletics and enrichment
- Improve the education our children receive while "holding the line" on taxes

EDUCATION

New York City Public Schools – Aviation High School
City University of New York
State University of New York College at Old Westbury

COMMUNITY ACTIVITIES

- Pack 161 – Cub Scout den leader



Anthony F. DeLouise

PHONE: 631.905.8789

ADDRESS: 16 Walnut Drive, Shoreham, NY 11786

runners during the "Race for the Cure" fundraising events for breast cancer.

PROFESSIONAL OR BUSINESS EXPERIENCE FOR THE LAST FIVE YEARS

- Own and operate RedRock Technologies, a company geared towards providing information processing technology, network design, database design and programming to small and mid-size businesses. RedRock has also developed a number of programs for the general public. Our current project is GrieveYourTaxes.com, a system that allows homeowners on Long Island to produce tax grievance petitions online without contracts or commissions.
- Associate Real Estate broker with Century21 Castle in Rocky Point.

ENUMERATION OF SPECIFIC PRIORITIES IF ELECTED

Born in Greenwich Village in Manhattan in 1950, our family moved to Long Island in 1975 and finally relocated to Shoreham in 2006. Shoreham's close knit and friendly community with rustic homes is what attracted us.

I am married to my wonderful wife of 38 years, Mary Ellen, who is a retired NYS Supreme Court Reporter and Past President of CSEA Judiciary Local 330. We have twin boys who went through the public school system and graduated from Northeastern University's College of Engineering in Boston with degrees in chemical and civil engineering. Having seen them through their education, my

wife and I understand the importance of a good, well-rounded education along with the need for parental, school and community involvement.

Please visit my website at www.anthonyselouise.com to read more and ask questions.

CONTRIBUTIONS CANDIDATE CAN MAKE TO THE SCHOOL DISTRICT:

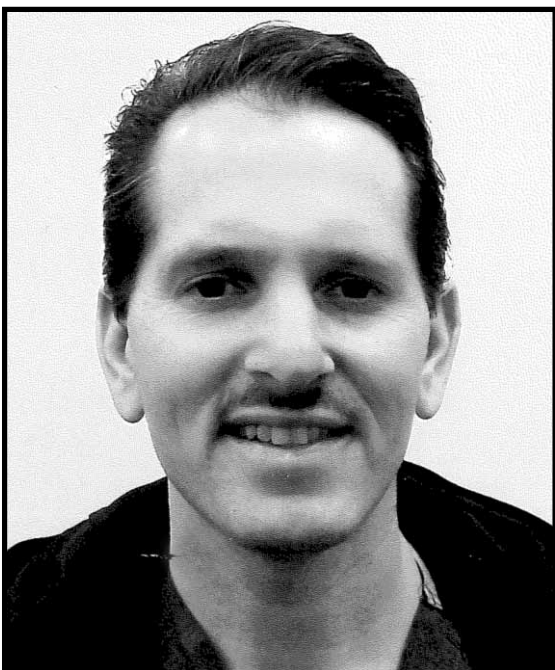
- My experience in running both business-to-business and business-to-consumer through good and hard times gives me an edge in balancing the needs of clients and employees during these financial times.
- Additionally, as a real estate broker, I hear the concerns homeowners have today. Real estate taxes, jobs and declining property values all add to the stress people are feeling. Property taxes and property values are very important to all homeowners. My experience in designing and programming the Grieve Your Taxes system gives me a good understanding of the property tax structure and how it affects homeowners. This knowledge will prove valuable when developing the next school budget.
- Having sons that graduated from Northeastern University gives me an understanding of the importance of a good, well-rounded education and the need to get involved. Combine this with my business and real estate experience and I bring very valuable assets to SWR especially during these turbulent financial times.

EDUCATION

- Pace University – Marketing and Management.
- IBM Systems Science Institute – Large Scale Computer Project Management
- Control Data Institute – Advanced Systems Programming.
- Cooper Union at NYU – Continuing education on large-scale network management and programming.

COMMUNITY ACTIVITIES

- Computer Merit Badge Counselor for the Boy Scouts of America.
- Rocky Point Lions - Past President, Secretary and Treasurer.
- Past member of the Port Jefferson Lions.
- While a member of these fine organizations, I worked with Lion Club members on various fundraising projects such as the holiday food drive, was instrumental in developing the Rocky Point Lions Journal and worked with Mather Hospital on their "One Enchanted Evening" fundraising events. Also did work to help support



Keith Christian Field

PHONE: 631.849.3623

ADDRESS: 59 Sherwood Drive, Shoreham, NY 11786

- Volunteer for medical staff for soccer and baseball leagues
- St. Charles Hospital – Board member of the Stroke Committee

PROFESSIONAL OR BUSINESS EXPERIENCE FOR THE LAST FIVE YEARS

- Emergency Physicians Assistant at St. Charles Hospital – (2002-present)
- Medical Physicians Assistant – Family Wellness Center – (2005-present)
- Emergency Physicians Assistant at St. Catherine's – (2008-2009)
- Mather Hospital Emergency Physicians Assistant – (2010-present)

ENUMERATION OF SPECIFIC PRIORITIES IF ELECTED

- Enrich the academic programs

- Improve the academic and physical environment of our schools
- Focus on our children and do what is beneficial for their future
- Give opportunities for the students to be competitive in the real world
- Teach to the kids, not to the tests

CONTRIBUTIONS CANDIDATE CAN MAKE TO THE SCHOOL DISTRICT:

- Critical thinking
- Creating and molding a safe school environment
- Supporting and encouraging enrichment programs for all students at all different levels and different activities
- Strong contributor for balancing budgets

EDUCATION

University of South Carolina – B.S. (2000)
Touro – Physician Assistant Professional Program (2002)

COMMUNITY ACTIVITIES

- Assists with Little League baseball and soccer



William J. McGrath

PHONE: 631.241.1497

ADDRESS: 262 Long Pond Road, Wading River, NY 11792

ENUMERATION OF SPECIFIC PRIORITIES IF ELECTED

- I seek a position as a Trustee of the Board of Education because it has never been a more critical time in our district to find ways to support the academic and social development of the children of this district. I will strive to continue to offer a balanced, levelheaded voice in representing the people of this district. I will continue to work with the administration for cost-saving ways to enhance our capabilities in Science, Technology, Engineering, and Mathematics. I will continue to strive to ensure we offer a well-rounded, challenging curriculum and diverse range of student activities for our children.
- I will work tirelessly to improve the SWR school district's financial condition as we go forward into these challenging times debating how to fund public education.
- I will work to ensure the district continues to upgrade its technology in an economical and timely way to give our teachers and students the best tools to make this district one of the best in the country.
- Shoreham-Wading River has been a leader in providing a cost-effective, rigorous instructional program, and we now need to make some hard choices if we are to continue this approach into the future. The District will face these challenges with a new administrative leader; one that will come to realize that Shoreham has already made the types of cuts we are seeing in other districts throughout Long Island and the state. We are at a crossroads in that

about all there is to cut from our budgets are those things that have a direct impact on the education of our children. We must pursue every avenue in ensuring we can maintain as much as possible without overburdening our community, and I will do all that I can to help us move forward.

CONTRIBUTIONS CANDIDATE CAN MAKE TO THE SCHOOL DISTRICT:

- As a trained researcher, I would like to see the district continue to try to take maximum advantage of the wealth of scientific and entrepreneurial knowledge that abound in our area. I will work to make these bridges possible.
- I will continue to advocate for the judicious improvement of our aging infrastructure. Continued support of plans to improve our buildings and grounds to ensure the maintenance of a safe and healthy learning environment for our staff and students.
- I think that the best contribution I can make to this district is to be a good listener, making sure that ALL sides of a discussion are heard and treated respectfully. To try to ensure that levelheaded agreements are reached that serve the best interests of the district's goals. And to do this while keeping in mind that we are a predominantly public financed operation that uses highly trained individuals to give educational and social support to the children of the district. We will strive to make sure future generations of our highly educated, motivated children will leave our homes and district with the best chances for a bright future.

EDUCATION

Widener University – B.S. *cum laude*
Biology
University of Vermont – PhD in
Biochemistry

COMMUNITY ACTIVITIES

- SWR Little League Coach
- SWR School District Space and Facilities Committee since inception
- Trustee of SWR Board of Education since July 1, 2008
- SWR Audit Committee member since 2008

PROFESSIONAL OR BUSINESS EXPERIENCE

I have worked at Brookhaven National Laboratory in a research program with a goal of developing new anti-viral drugs. Science over the years has, as our education system, become the ability to do as much as you can in the most cost-effective manner.



Stephen T. Offutt

PHONE: 631.209.9404

ADDRESS: 2 Cheryl Drive, Shoreham, NY 11786

annual charity drives. In this capacity I have coordinated the raising of charitable donations from our employees and customers for the March of Dimes, St. Jude Children's Hospital and Haitian Earthquake Relief. I have also led Kmart's local New York City volunteering effort in 2010 by coordinating managers and associates to support Saint Rita's Academy through our partnership with Catholic Charities.

PROFESSIONAL OR BUSINESS EXPERIENCE FOR THE LAST FIVE YEARS:

- District Manager, Sears Holdings Corp., Kmart Store Operations, NYC, NY
- District Manager for Kmart Store Operations, Long Island (July 2006-June 2008)
- State of Connecticut (June 2008- September 2008)
- Flag Ship District in New York City and Westchester County (September 2008-Present). In this role I manage all aspects of our retail store operations. These responsibilities include but are not limited to expense control, human resources, performance management, customer relations, facilities, inventory control and compliance with government regulations. Additionally, my staff interacts with local and national news media and our celebrity and brand partners.

ENUMERATION OF SPECIFIC PRIORITIES IF ELECTED

Like most school districts on Long Island, and indeed throughout the State of New York, our greatest challenge is to maintain the quality of our children's classroom education while at the same time continuing to provide support for our sports, music and arts programs. These issues must be addressed with a clear understanding that our local taxpayers have suffered in very real terms during our current economic conditions and that proposed tax increases on even the most modest levels will be met with great concern. We are facing cuts in state aid and staggering growth in employee benefit costs.

CONTRIBUTIONS CANDIDATE CAN MAKE TO THE SCHOOL DISTRICT:

I have spent my career working in the highly competitive discount retail industry. I have learned to manage through many rounds of reductions in staff and other resources and still achieve business objectives and comply with government regulations. I believe that my years of experience in this business environment will enable me to constructively add to the deliberations of our school board in making the critical budget decisions that will have to be made over the next few years, as we face ever increasing shortfalls between our forecasted expenditures and revenues.

EDUCATION

University of Louisville, Louisville, Kentucky, (1981-1985)
Dowling College, Oakdale, New York, (1995 – 1996)

COMMUNITY ACTIVITIES

- United States Marine Corps Reserve, (1981-1987)
- Pi Kappa Phi Fraternity, Beta Gamma Chapter, University of Louisville, Secretary 1983-1984, President 1984-1985.
- Boy Scouts of America, Cub Scout Pack 161, Shoreham, NY, Assistant Cub Master 2007-2010
- Through my employer, in addition to my management responsibilities, I have served as the Northeast Region Captain for Kmart's



John Zukowski

PHONE: 631.775.0391

ADDRESS: 2 Sturbridge Court, Shoreham, NY 11786

PROFESSIONAL OR BUSINESS EXPERIENCE FOR THE LAST FIVE YEARS
Partner - Zukowski & Zukowski, P.C.

ENUMERATION OF SPECIFIC PRIORITIES IF ELECTED

- Providing a quality education to our children despite an acknowledged inequity in the State Aid formula, unique to Shoreham-Wading River, that annually deprives our district of our fair share of State Aid as compared to surrounding districts.
- Pressure must be placed on our elected representatives in Albany to remedy the State School Aid formula to ensure Shoreham-Wading River receives the aid it is entitled to.
- In order to meet our obligations to the children and the taxpayers, it is imperative that we seek relief from unfunded state mandates, and to explore the consolidation of overlapping administrative services and service provider functions. A successful Board member must understand the current laws and legal limitations placed on the District, and

the actions required to make the necessary changes.

CONTRIBUTIONS CANDIDATE CAN MAKE TO THE SCHOOL DISTRICT:

- Utilize a comprehensive knowledge of District Finances and the history of the inequitable State Aid formula to guide the district on a course of legal and political action to remedy this long term inequity, which unfairly harms the children and taxpayers.
- Use experience in commercial law to negotiate with School District vendors to ensure the district taxpayers receive the most cost effective services; extensive experience in Municipal Law will be useful in interpreting and navigating changes necessary to consolidate services for the district.
- Litigation experience will allow for the oversight of legal expenses charged by district counsel, \$350,000.00 for the 2010-11 school year, to ensure accountability to the taxpayers and minimize costs.

EDUCATION

B.A, Political Science, SUNY Geneseo (1988)

J.D. St. John's University School of Law (1993)

COMMUNITY ACTIVITIES

- Member of SWR School District Financial Review Committee 2008-09
- St. Mark's CYO 8th Grade Boy's Basketball Coach
- Volunteer, Boy Scout Troop 94, Wading River

Qualifications *for Voting*

REMEMBER TO VOTE!

Tuesday, May 17, 2011

High School Gymnasium

7:00 a.m. – 9:00 p.m.

Comprehensive Budget information is available on the District's website at www.swrschools.org

A voter shall be entitled to vote at any school meeting for the election of school district trustees and school budget, and upon all other matters which may be brought before such a meeting, who is:

- A citizen of the United States
- A resident of the district for a period of thirty days preceding the meeting at which he/she is to vote
- Eighteen years of age or older
- Currently registered with the school district or has voted in the general election in the last four years

Absentee Ballots:

Applications for absentee ballots may be obtained at the office of the District Clerk, 250B Route 25A, Shoreham, New York any school day between 8 a.m. and 4 p.m. Completed applications must be received by the District Clerk at least seven (7) days before the election if the ballot is to be mailed to the voter. All absentee ballots must be returned to the District Office no later than 5 p.m. the day of the vote. Absentee ballots will be issued for those reasons stated in the Education Law, Section 2018-A.

BOARD OF EDUCATION - SWRCSD
Shoreham, NY 11786

- | | |
|-------------------------------|--------------------------|
| Jack Costas, President | Leo Greeley, Trustee |
| Marie Lindell, Vice President | William McGrath, Trustee |
| Robert Alcorn, Trustee | Rich Pluschau, Trustee |
| Michael Fucito, Trustee | |

Harriet Copel, Ed.D., Superintendent of Schools



SHOREHAM-WADING RIVER
CENTRAL SCHOOL DISTRICT

www.swrschools.org

BUILDING THE FOUNDATION FOR SUCCESS